






**12/46B York Terrace SALISBURY SA**

3  2  1 

Do not miss this opportunity to secure this fabulous Townhouse, offering quality and space and located right in the heart of Salisbury.

This modern and stylish two storey townhouse represents excellent value and offers a low maintenance eco-friendly and secure lifestyle in one of South Australia's thriving locations.

The home has a charming and contemporary elegance featuring a great standard of fittings and finishes throughout.

The lovely open plan living area is streamlined offering a modern kitchen with stainless steel appliances, gas cooktop, plenty of built-in storage cupboards, breakfast bar with double bowl sink and dishwasher. The adjacent dining

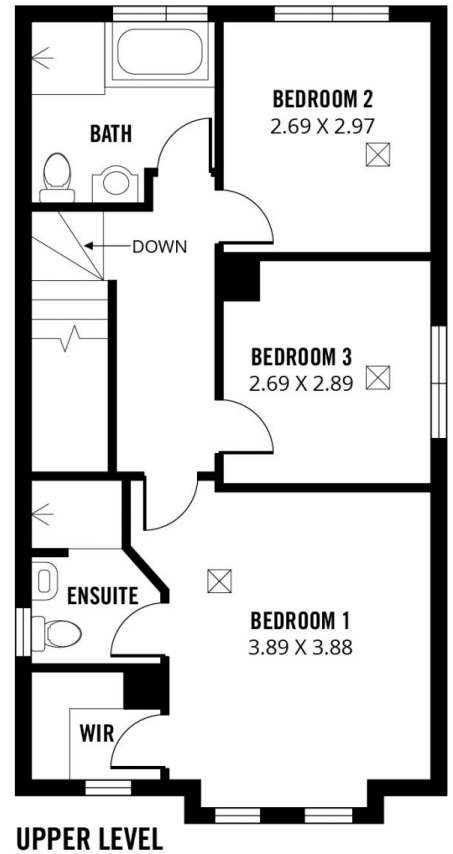
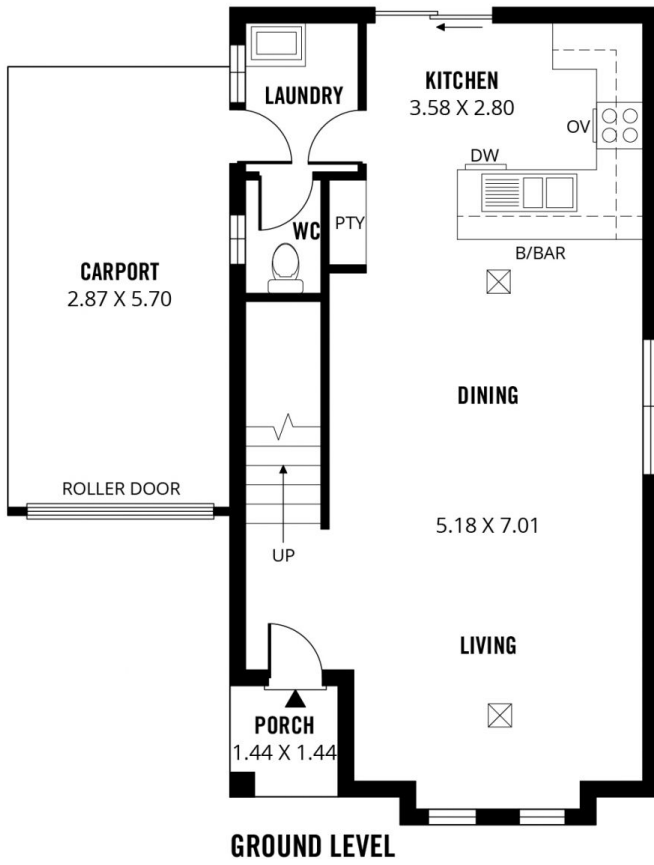
**Price** : UNDER CONTRACT!

**View** : <https://www.michaelkris.com.au/sale/sa/north-north-east-suburbs/salisbury/residential/house/8026731>



**Michael Georgiadis**  
0401 485 565

RWT



**117m<sup>2</sup>**

**TOTAL**

101m<sup>2</sup>

Living

16m<sup>2</sup>

Carport



## 12/46B YORK TERRACE, SALISBURY

Scale in metres. This drawing is for illustration purposes only. All measurements are approximate and details intended to be relied upon should be independently verified.

Produced by **The Fotobase Group**